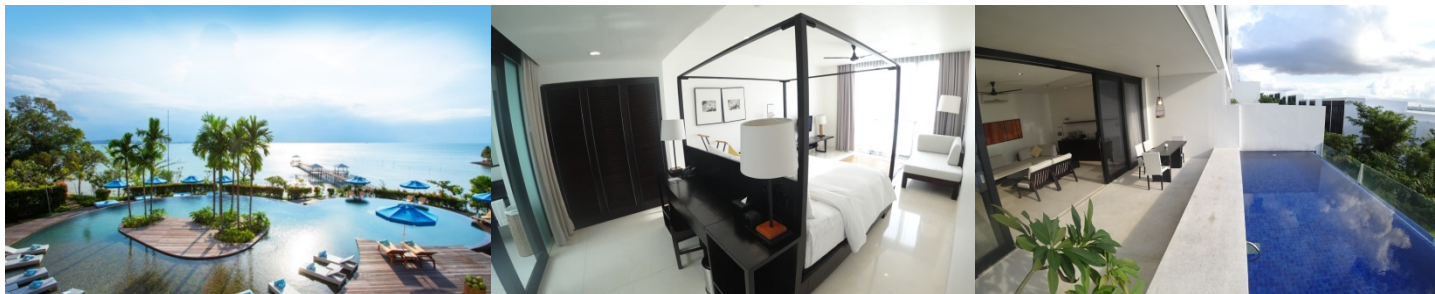


Montigo Resort 5*



PRIVATE POOL DELUXE 1BR / HILL SIDE VILLA Per Person Per night	ADULT & CHILD (GV2)								CHILD		
	Single		Twin		Triple		Quad/Fifth		With Bed	No Bed	Infant
	1BR PREMIER				2BR HILLSIDE VILLA						
	WD	WE	WD	WE	WD	WE	WD	WE			
2D1N Tour Package	S\$348	S\$429	S\$228	S\$278	S\$218	S\$258	S\$198	S\$225	N/A	S\$148	S\$75
2D1N Free & Easy	S\$338	S\$419	S\$218	S\$268	S\$208	S\$248	S\$188	S\$215	N/A	S\$138	S\$75
Extension Night	S\$268	S\$348	S\$135	S\$160	S\$120	S\$139	S\$100	S\$129	N/A	S\$45	FOC
Note	1BR PREMIER MAX FOR 2 ADULT				2BR HILLSIDE VILLA MAX FOR 5PERSON (INCLUDE ADULT AND CHILDREN)						

Tour Package Include of :

- ✓ Return Ferry Ticket (Sin/Batam/Sin)
- ✓ 1 Night Hotel Accommodation with Breakfast,
- ✓ 1 Day Batam City & Shopping Tour with Seafood Lunch
- ✓ Land Transfer and Local Guide Assist.

Free & Easy Package Include of :

- ✓ Return Ferry Ticket (Sin/Batam/Sin)
- ✓ 1 Night Hotel Accommodation with Breakfast,
- ✓ Land Transfer (pier/hotel/pier) and Local Guide Assist.

The Package Exclude of:

- ✓ Batam Guide & Driver Tipping of **S\$4/pax/day**.
- ✓ Personal Insurance, Room Service, Optional Tours, Portorage Fee, Visa Fee, and all expenses of personal nature.
- ✓ Gala Dinner (TBA)

Ferry Timing:

SIN - BTM : **0830HRS (Tour Package) | 0950, 1020, (Free & Easy)**

BTM - SIN : Pick up from Hotel to ferry terminal is **ALL FIXED AT 1200HRS** after check-out Hotel (land transfer)
1400, 1510, 1610, 1720, 1820HRS (Ferry time)

*Require for early or late departure will be imposed additional surcharge for land transfer is S\$10/pax/trip for 8am to 6pm and S\$15/pax/trip for 6pm to 9pm and midnight charge for after 9pm is S\$25/pax/trip (**min 2 paxs**)

Weekend, Eve, PH & School Holiday Surcharge:

- Weekend rate is applicable for Saturday, Eve of Public Holiday and Public Holiday.
- Peak Season Surcharge of **S\$120per villa per night** will apply from weekend rate plus minimum stay of **2 consecutive nights** is required for the period of **15-16 JUN, 9-10AUG, 31OCT-2NOV, 23-31DEC 2024, 29JAN -1FEB 2025, 29-31MAR 2025**
- The maximum capacity per villa is 5 person. The 5th Person sharing the villa and using existing sofa bed.
- Child rate only apply when he/she is under 5th pax

Remark:

- **Travel Validity from now till 31 MAR 2025.**
- Hotel room's definition for Weekday is Sunday to Friday and Weekend is Saturday and eve of & PH.
- All prices herein are subject to change without prior notice, arising from currency fluctuation, local taxes, etc.
- Minimum **2 persons** travelling together & Single traveller may subject to surcharges
- Rates are subject to change without prior notice.
- Ferry schedules are subject to confirmation and subsequent changes before/after payment. The service provider reserves the right to alter schedule with/without prior notice.

Tour Code: **IDBTM01**
Updated : 13/05/24



MadFly Travel 狂翔旅(KPK/LN No :10901)

Contact/Whatsapp: +6011 – 1008 6705

Website: www.madflytravel.com | Facebook: MadFly Travel 狂翔旅

